

IPROS Network – The Creation of Research Atmosphere in Primary Care

Z.Grossman¹, E.Kahan²



¹Maccabi Health Services,
²Department of Family Medicine,
Sackler School of Medicine, Tel
Aviv University



Trends in Pediatric Practice

- The majority of pediatric patients is treated in a community setting
- The wide spectrum of clinical severity seen in the office differs from that seen in hospitals
- Psychosocial morbidity (“The New Morbidity”) is frequently encountered in the primary care setting

Primary Care Research Advantages



- The sample represents the true character of the disease
- Enables research of psychosocial issues
- Allows health care services research
- Helps to improve quality of care

Primary Care Research- Difficulties



- Lack of time
- Shortage of funding
- Little help in designing a study
- Difficulty in getting ethic approval
- Little or no help in doing the study

Primary Care Research Difficulties -cont.



- No help in writing down the manuscript for publication
- Loneliness of the solo practitioner
- Emotional involvement with patient care



Quick Search

My Profile [edit](#)

My Friends

My Photos

My Groups

My Events

My Messages (1)

My Account

My Privacy

Oregon Flyer

We made Announcements better

Check out the new Facebook Flyers.

Starting at only \$5!

Advertise to your campus now.

[create | see all]



View More Photos of Me (18)

[Edit My Profile](#)

[Edit My Picture](#)

[Edit My Privacy](#)

Connection

This is you.

Friends at Oregon [edit](#)

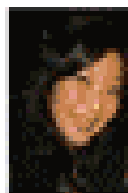
Kathryn has 22 Oregon friends.



Reiner Heyden



Micah Sandell



Erin Akagi

Information [edit](#)

Account Info

Name: Kathryn Ortland
Member Since: August 2, 2005
Last Update: November 10, 2005

Basic Info [\[edit \]](#)

Geography: Seattle, WA
School: Oregon '05
Status: Alumnus/Alumna
Sex: Female
Concentration: Journalism; Magazine Japanese
Birthday: 10/16/1982
Home Town: Bellevue, WA 98006
High School: Newport High School '00

Contact Info [\[edit \]](#)

Contact Email: ortland@gmail.com
School Email: kortland@uoregon.edu
Website: http://www.numine.com

Personal Info [\[edit \]](#)

Looking For: Whatever I can get
Interested In: Women
Men
Relationship Status: In a Relationship
Political Views: Liberal
Interests: Photography, computers, hiking, scuba, Japan

Professional Info [\[edit \]](#)

Job: Rising star at SEOmoz.org

MySpace

File Edit Options Help

Back Forward Stop Home <https://myspaceenhanced.com/cgiproxy/nph-proxy.pl/0101> Go Google

My Profile Home >> Login to MySpace Messages Unblocker (Beta) Link Previews (Beta) Flash Stopper [NEW Profile layouts!](#)

Friend Pics Tools

myspace.com
a place for friends

Search powered by Google

Home Browse Search Invite Film Mail Blog Favorites Forum Groups Events Videos Music Comedy Classifieds

31,944 uploaded today!

Cool New Videos

Gay Robot Gay Robot	Air Freshener Guy	Inspectors Flappa	Sneak Peak Joe Rogan

Books Comedy Jobs **NEW!** MySpaceIM
 Blogs Filmmakers Movies Schools
 ChatRooms Games Music TV On Demand **NEW!**
 Classifieds Horoscopes Music Videos Videos

Member Login

Hi, Russell [\[Not you?\]](#)

E-Mail :

Password :

Remember Me

[Forgot your password?](#)

Cool New People

Derek 	Laura 	andrew
------------------	------------------	-------------------

MySpace Music [\[more music\]](#)

The Legion Of Doom
 Electronic / Big Beat / Alternative
 Los Angeles, California

Trever Keith (of Face to Face) and producer Chad Blinman (The Get Up Kids, Saves The Day) have teamed up to create *Incorporated*, the first ever album of punk, hardcore, and emo mash-ups. The album, out on March 6th, includes mashes of tracks by Dashboard Confessional, Taking Back Sunday, Underoath, Gnarl Barkley, My Chemical Romance, and more.
 » [Listen Now](#)

MySpace Specials

MySpace Impact Awards WINNER:
Kentucky Equality Federation

You NOMINATED. You VOTED. Now we are thrilled to announce your MySpace Impact Awards WINNER in the Social Justice category: **KENTUCKY EQUALITY**

Videos [\[more videos\]](#)

The Middle Show - ComicCon 2007
 Comedy team coverage takes you around the 2007 NY Comic Convention. Music: Kevin MacLeod.
 » [Watch It Now!](#)

Sponsored Links

[Free Video Chat](#)

\$\$\$New Job/Career/Biz\$\$\$
 You deserve better & we'll make it happen for you in a BIG way!!!!!!!

Find Misspelled Auctions
 eBay listings with typos go cheap. Search now.

Who's Your Soul Mate?
 Predict exactly, down to the name, who your Soul Mate is. Try it!



Research Network

- A number of primary care clinics grouped together in the structure of a network for the purpose of performing research in the community
- The network is the “Research Laboratory “ of the primary care setting

Research Networks - Examples



- PROS - Pediatric Research in Office Setting (US)
- Italy, France, UK, The Netherlands, New Zealand, Australia



Research Networks - Israel

- RAMBAM - family medicine
 - incorporates 150 family practice clinics
 - established 1990
- IPROS – pediatrics
 - incorporates 300 pediatric clinics
 - established 1996



IPROS

- Israel Pediatric Research in Office Setting network
- Affiliated with IAPA, Israel Ambulatory Pediatric Association
- **IPROS mission – to facilitate research activity in the primary pediatric care**



Key Elements in a Network

- Participating pediatricians
- Research projects
- Intra-net communication
- Others

Participating Pediatricians

- Highly motivated
- Represent different setups of primary care
- Come from different geographic regions and HMO's
- Treat patients with different socioeconomic backgrounds





Incentives for Research

- Self satisfaction
- Academic degree
- Payment

Research Projects

- Should interest the primary pediatrician
- Related to the daily practice
- Simple and easy
- Of short duration
- Requiring reasonable budget
- Ethically uncomplicated
- Fit the framework of a multicenter study



Projects by Designs

- Clinical drug trials
- Self designed clinical studies
- Attitudes surveys
- Database analysis
- Disease monitoring

Clinical drug trials

- Shigella vaccine - PIDJ, 2003.
- Attenuated flu vaccine
 - PIDJ 2006
 - NEJM 2007



Clinical drug trials

- Highly profitable
- Intermediate level of interest
- Requires meticulous work
- Time consuming
- Patient recruitment – critical
- Ethic Approval – through HMOs.
- Success rate - high



Self designed clinical studies

- Naturopathic drops for AOM – Pediatrics 2003.
- Ecchinacea, Propolis, Vit C for cold – Arch Ped Adolesc Med 2004.
- Paracetamol vs Ibuprofen - Arch Ped Adolesc Med 2006.

Self designed clinical studies

- Very interesting
- Funding – difficult
- Requires highly experienced PIs.
- Self organized logistics – critical
- Ethic approval – often complicated
- **Success rate - low**



Attitude surveys

- Pharyngitis treatment – IMAJ 2000
- Acetaminophen prescriptions - J Clin Pharm Ther 2005
- Exclusion from day care – Patient Educ Counsel 2006.



Attitude surveys

- Easy studies
- Level of interest – intermediate
- Minimal budget
- Ethic approval – easy
- Success rate - high

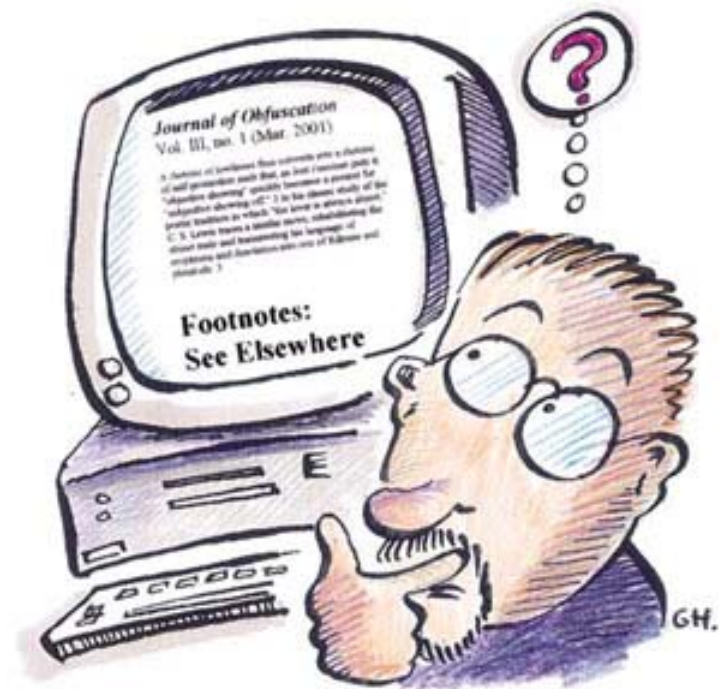


Database analysis

- Varicella vaccine- PIDJ 2004.
- Anemia incidence – Pediatrics 2006

Database Analysis

- Easy studies
- Minimal budget
- Level of interest – intermediate:
 - Clinical purpose?
 - Administrative purpose?
- Success rate – high



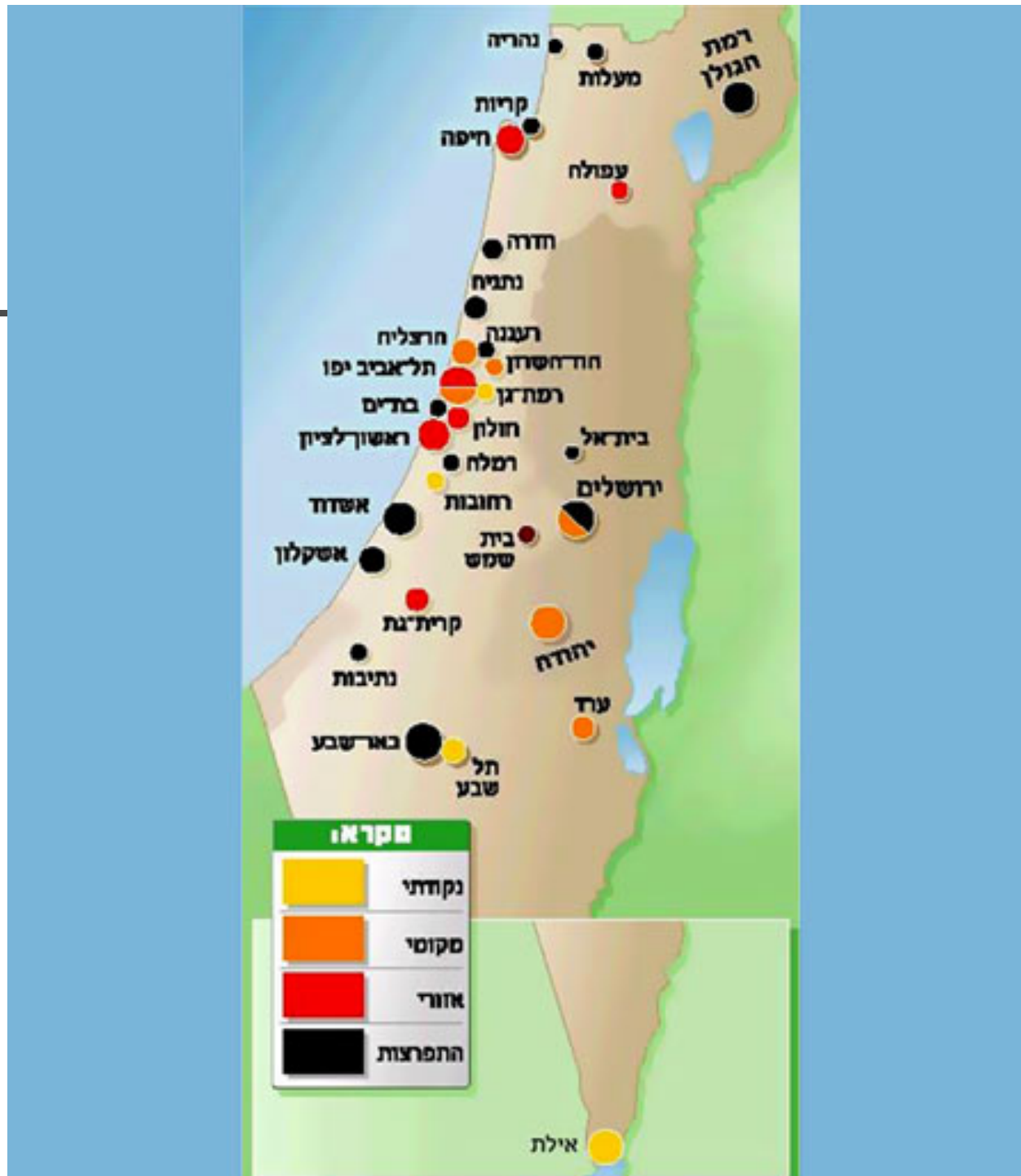
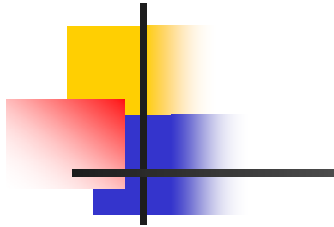


Disease monitoring

- Cross country influenza activity
- Web interface

Influenza monitoring

- Weekly reports from >60 clinics
- Reports based on number of patients seen with influenza like illness during the peak season
- Embedding the data in GIS – Graphic Information System





Intra-net Communication

- Meetings
- Telephone
- Fax
- Letters
- E-mail
- IPRONET mailing list



Meetings

- Annual meeting
- Update on ongoing projects
- Introduction of new proposals
- Lectures and workshops
- Group discussions



IPRONET mailing list

- A once “research only” list (brainstorming, recruitment)
- Now a general pediatric web community with research orientation
- **Not** a moderated list



Funding

- Research grants
 - Israel Ambulatory Pediatric Association
 - Israel Pediatric Association
 - Health research institutes
- Pharmaceutical companies
 - International CROs
 - Local companies



Other Factors

- Recruiting pediatricians
- Promotion of all levels of participation
- Network Spirit

Ethical dilemmas 1

- Patient recruitment issues:
 - Potential invasiveness(blood tests)
 - Informed consent understanding
- Primary clinic related:
 - Research takes priority over patient needs
 - Pressure by study patients on clinic staff

Ethical dilemmas 2

- Sponsor companies:
 - Limitations on the freedom of publication
 - Using research data for inaccurate advertising

Future directions

- Promoting high success rate initiatives:
 - Database analysis
 - Attitudes surveys (obesity?)
- Cooperation with CRO representatives
- Development of web based applications
- **Moving from facilitation to initiation:**
 - **Launching IAPA initiated and funded studies**



Thank you!